

SITEPLAN



1ST STOREY

- A. SENTRY POINT
- B. DROP OFF POINT
- C. CAR PARK (OPEN TO SKY)
- D. GENSET
- E. BIN CENTRE

5TH STOREY

- 1. CHILDREN PLAYGROUND
- 2. PAVILION WITH BBQ CORNER

SKY TERRACE PLAN - 14TH FLOOR

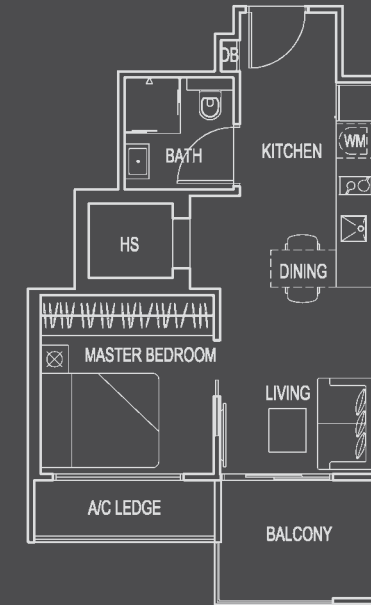


LEGEND:

- 1. GYMNASIUM
- 2. CHANGING ROOM CUM TOILET AND SHOWER POINT
- 3. LOBBY
- 4. SWIMMING POOL
- 5. POOL DECK
- 6. OUTDOOR SHOWER
- 7. WADING POOL
- 8. CABANA

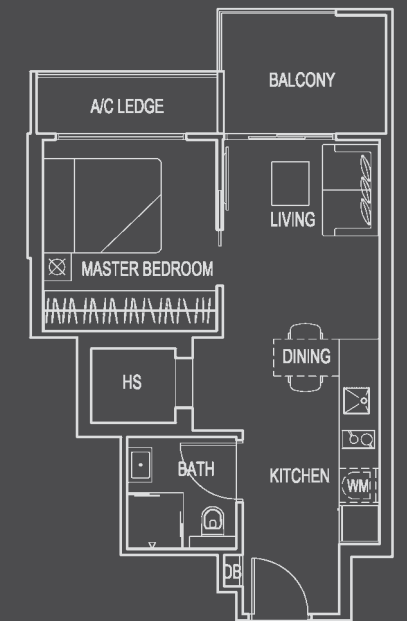
TYPE A
(1-BEDROOM)

UNIT #06-01 TO #13-01, #15-01 TO #24-01
#06-08 TO #13-08, #15-08 TO #24-08
#06-09 TO #13-09, #15-09 TO #24-09
AREA 474 SQFT / 44 SQM



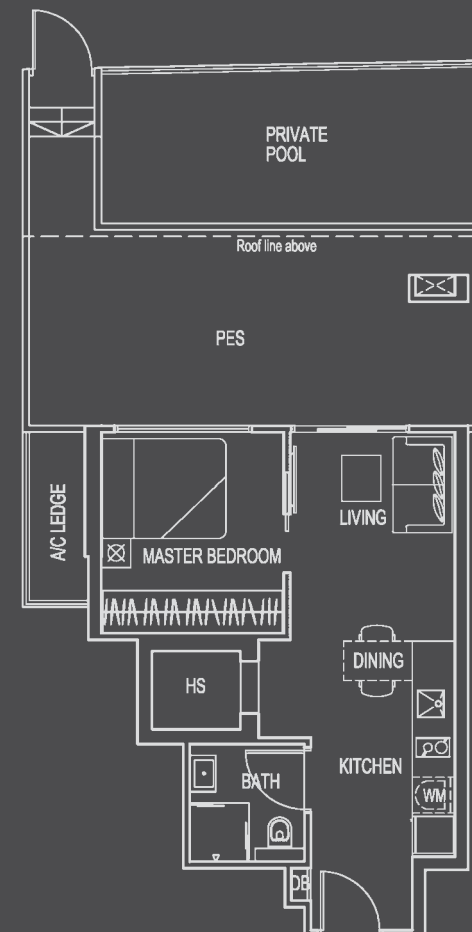
TYPE A1
(1-BEDROOM)

UNIT #06-04 TO #13-04, #15-04 TO #24-04
AREA 484 SQFT / 45 SQM



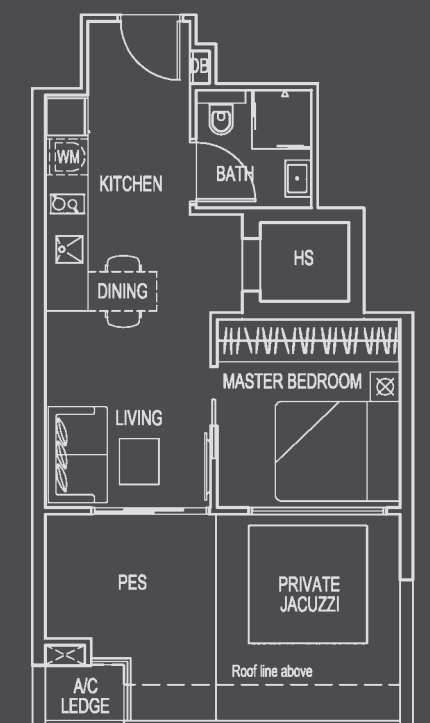
TYPE A1-G
(1-BEDROOM)

UNIT #05-04
AREA 850 SQFT / 79 SQM



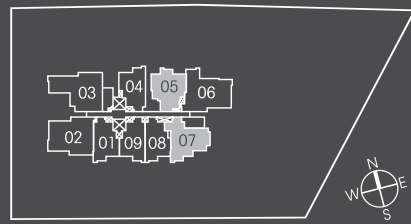
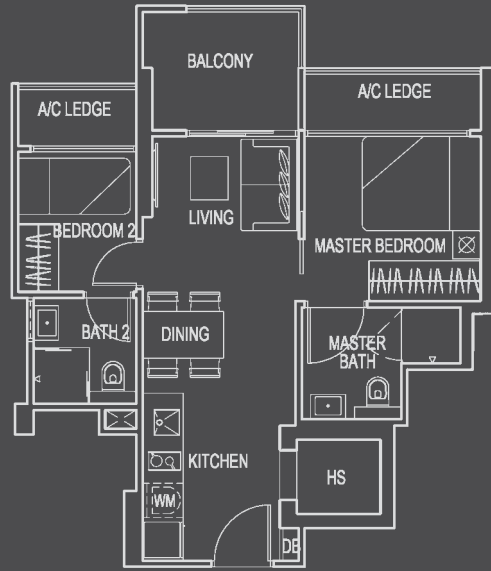
TYPE A-G
(1-BEDROOM)

UNIT #05-01, #05-08, #05-09
AREA 570 SQFT / 53 SQM



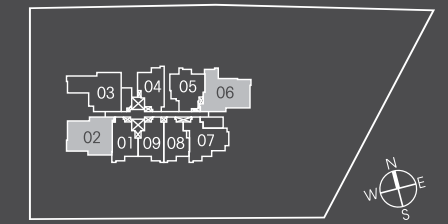
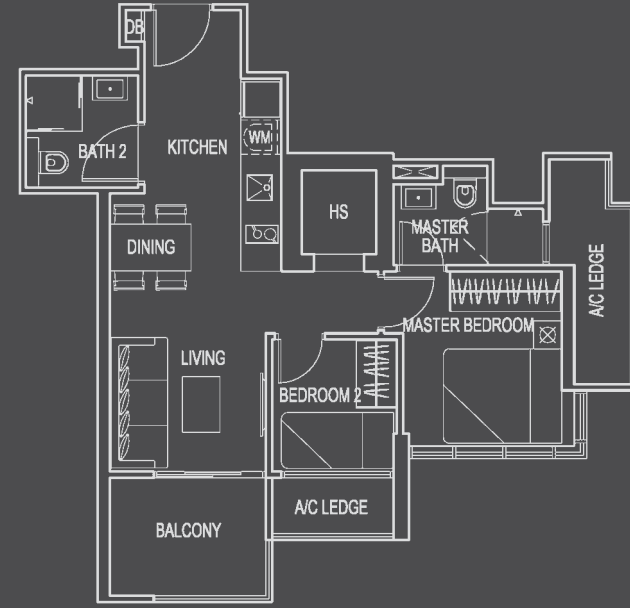
TYPE B
(2-BEDROOM)

UNIT #06-05 TO #13-05, #15-05 TO #24-05
AREA 560 SQFT / 52 SQM



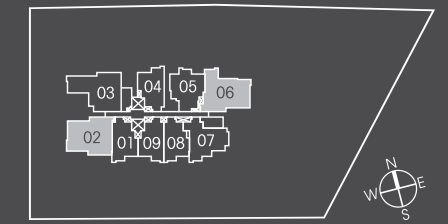
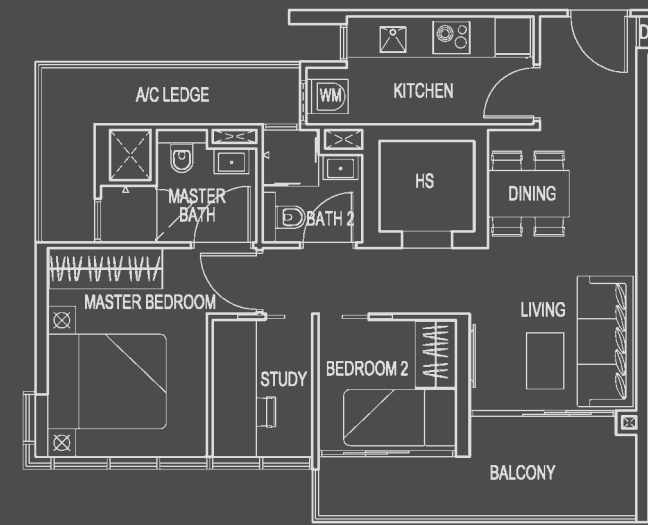
TYPE B1
(2-BEDROOM)

UNIT #06-07 TO #13-07, #15-07 TO #24-07
AREA 614 SQFT / 57 SQM



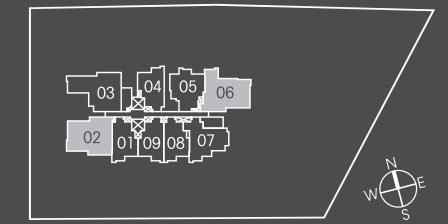
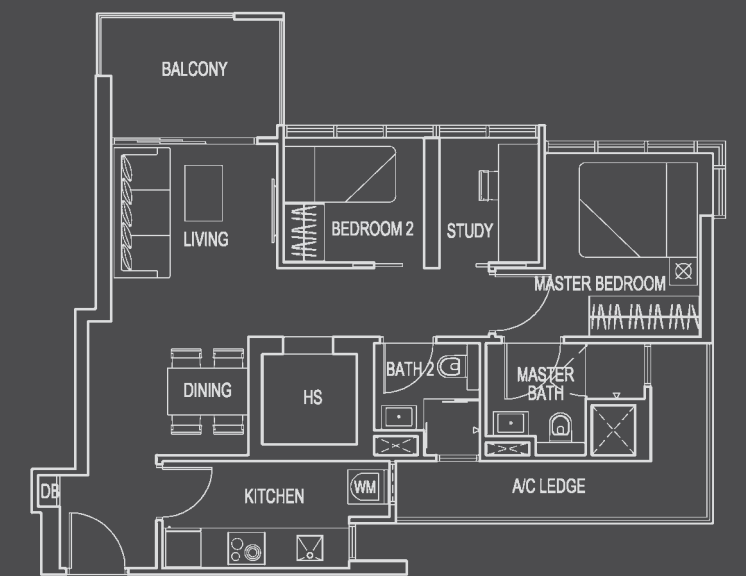
TYPE C
(2+1-BEDROOM)

UNIT #06-02 TO #13-02, #15-02 TO #24-02
AREA 775 SQFT / 72 SQM



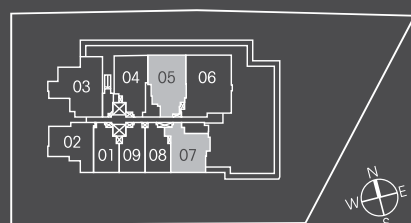
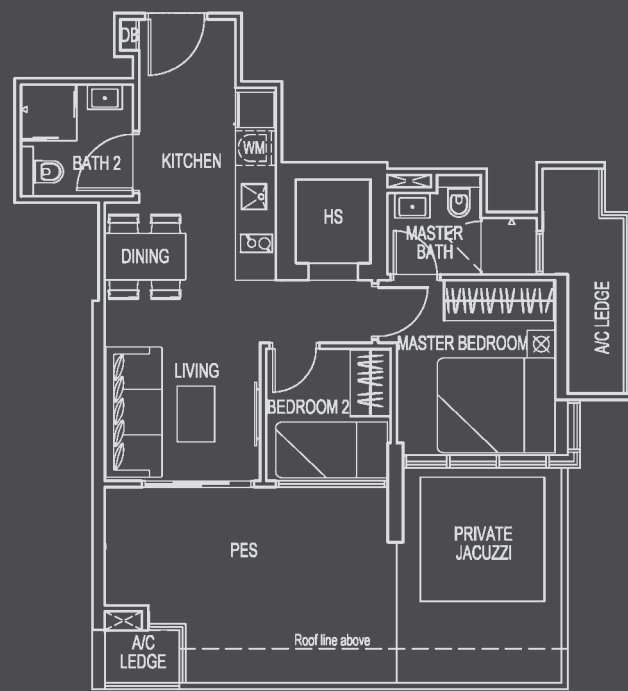
TYPE C1
(2+1-BEDROOM)

UNIT #06-06 TO #13-06, #15-06 TO #24-06
AREA 775 SQFT / 72 SQM



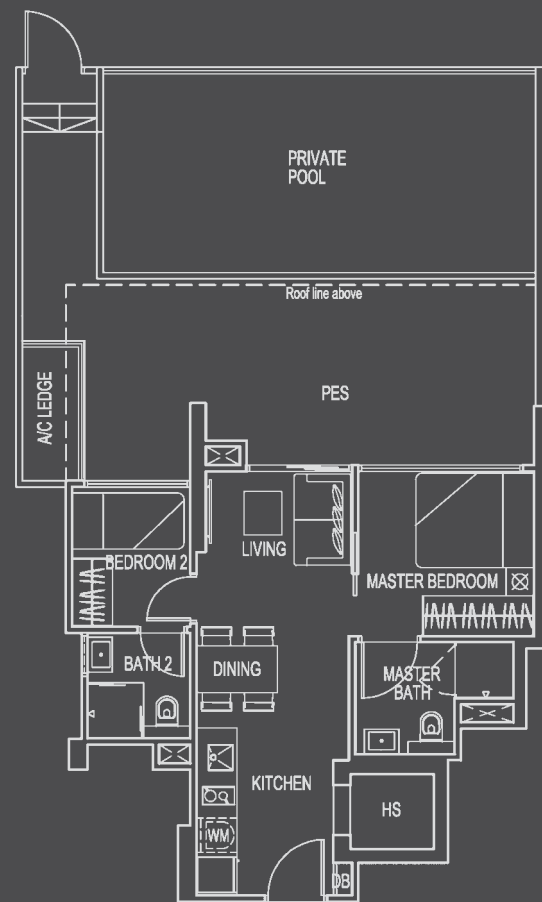
TYPE B1-G
(2-BEDROOM)

UNIT #05-07
AREA 807 SQFT / 75 SQM



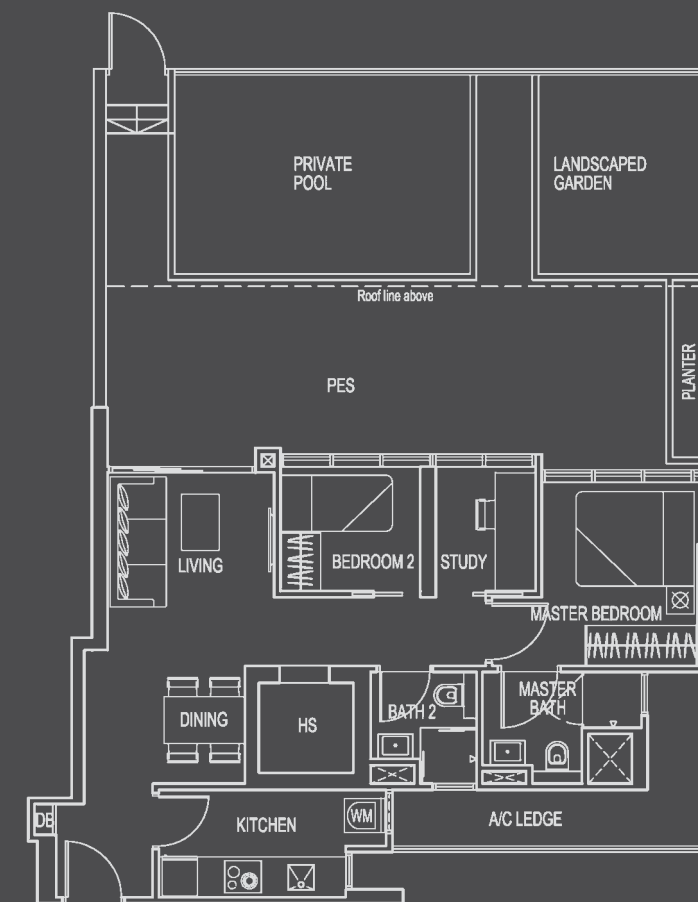
TYPE B-G
(2-BEDROOM)

UNIT #05-05
AREA 1033 SQFT / 96 SQM



TYPE C1-G
(2+1-BEDROOM)

UNIT #05-06
AREA 1378 SQFT / 128 SQM

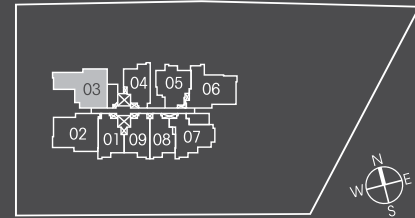
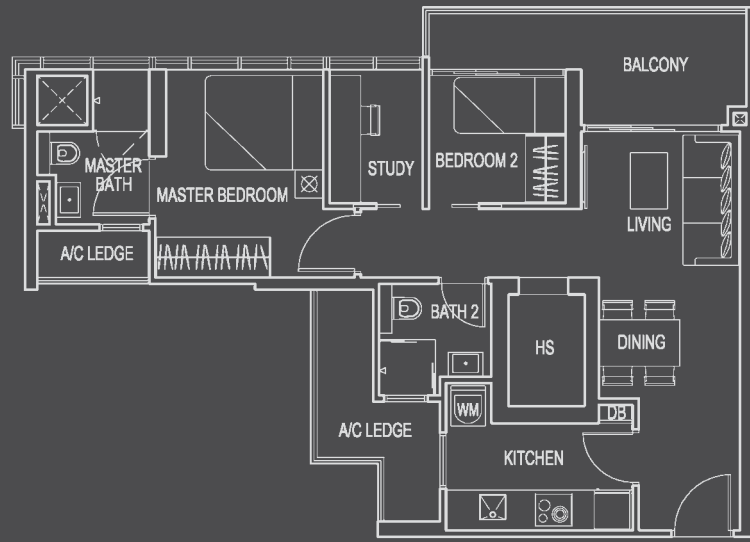


ALL PLANS ARE SUBJECT TO AMENDMENTS AS APPROVED BY THE RELEVANT AUTHORITIES.
FLOOR AREAS ARE APPROXIMATE MEASUREMENTS AND SUBJECT TO FINAL SURVEY.

ALL PLANS ARE SUBJECT TO AMENDMENTS AS APPROVED BY THE RELEVANT AUTHORITIES.
FLOOR AREAS ARE APPROXIMATE MEASUREMENTS AND SUBJECT TO FINAL SURVEY.

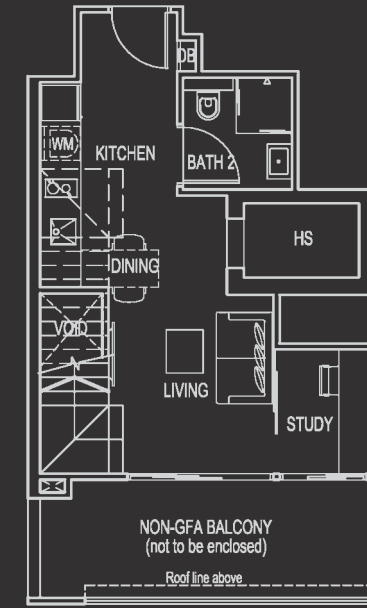
TYPE C2
(2+1-BEDROOM)

UNIT #06-03 TO #13-03, #15-03 TO #24-03
AREA 775 SQFT / 72 SQM

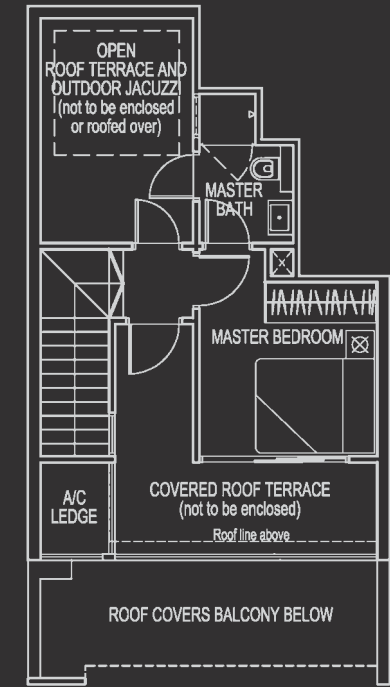


TYPE A-P
(1+1-BEDROOM PENTHOUSE)

UNIT #25-01
AREA 947 SQFT / 88 SQM



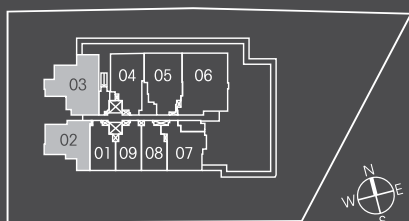
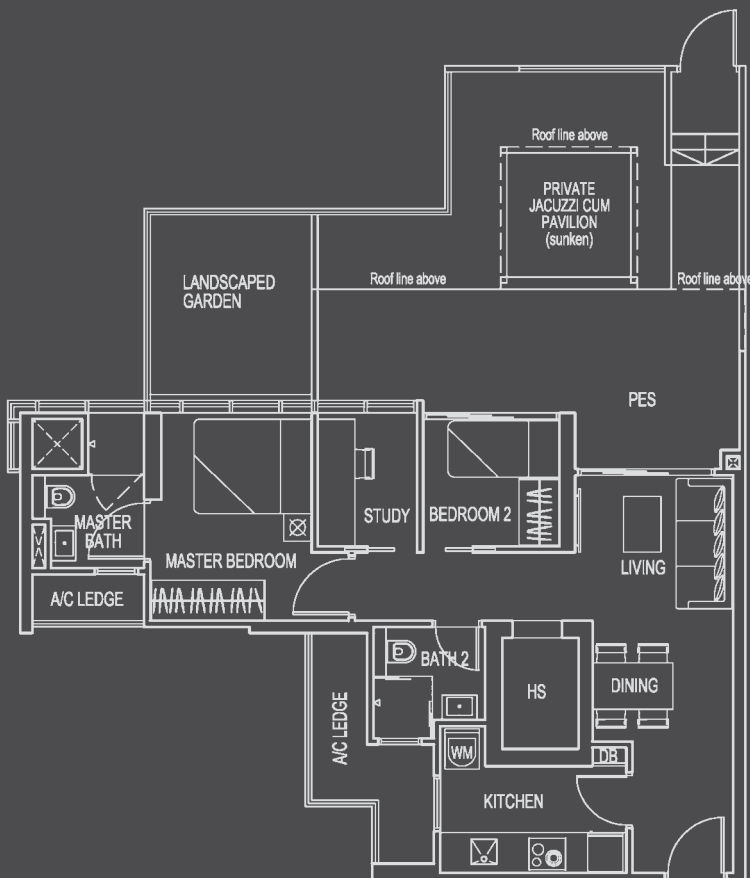
LOWER STOREY



UPPER STOREY

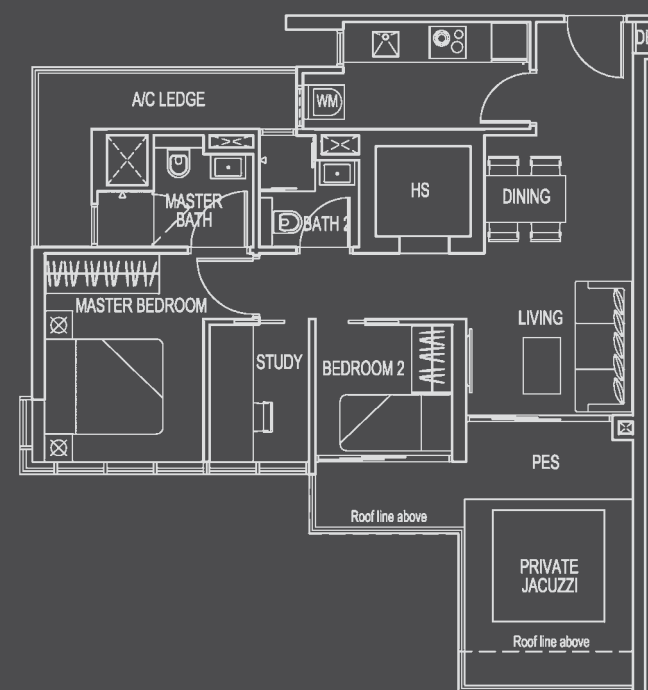
TYPE C2-G
(2+1-BEDROOM)

UNIT #05-03
AREA 1173 SQFT / 109 SQM



TYPE C-G
(2+1-BEDROOM)

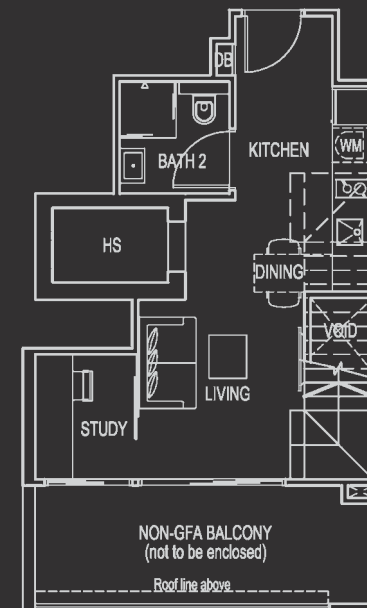
UNIT #05-02
AREA 850 SQFT / 79 SQM



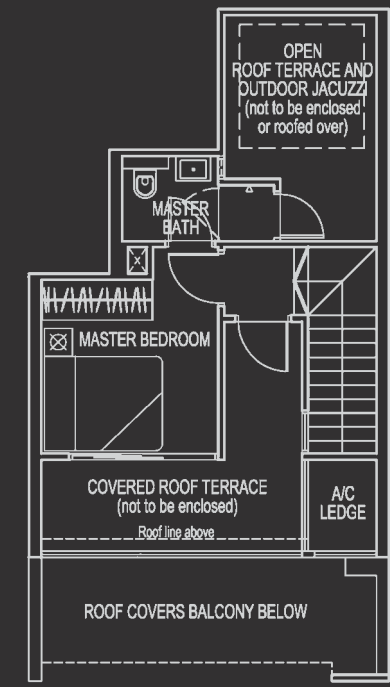
ALL PLANS ARE SUBJECT TO AMENDMENTS AS APPROVED BY THE RELEVANT AUTHORITIES.
FLOOR AREAS ARE APPROXIMATE MEASUREMENTS AND SUBJECT TO FINAL SURVEY.

TYPE A1-P
(1+1-BEDROOM PENTHOUSE)

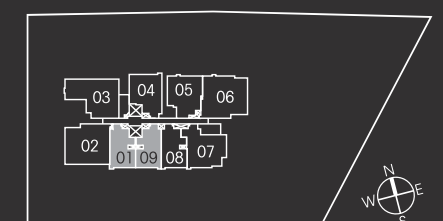
UNIT #25-09
AREA 936 SQFT / 87 SQM



LOWER STOREY



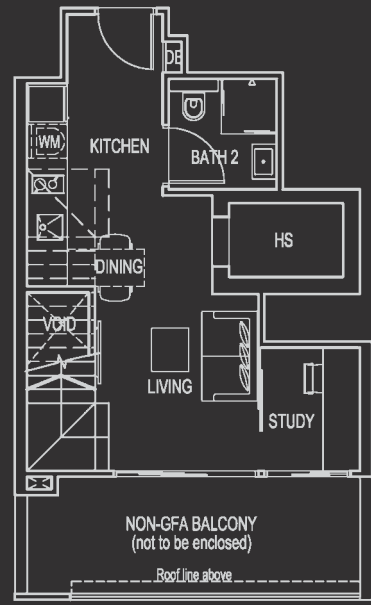
UPPER STOREY



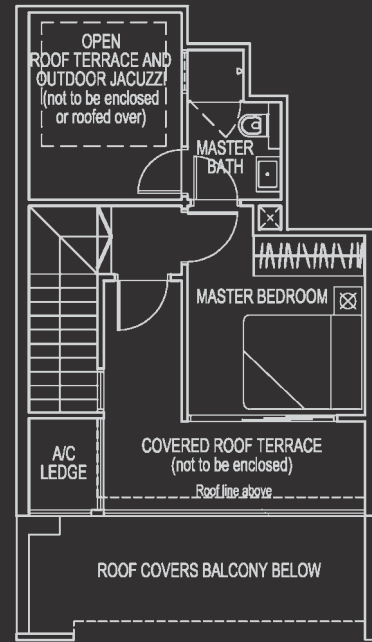
ALL PLANS ARE SUBJECT TO AMENDMENTS AS APPROVED BY THE RELEVANT AUTHORITIES.
FLOOR AREAS ARE APPROXIMATE MEASUREMENTS AND SUBJECT TO FINAL SURVEY.

TYPE A2-P
(1+1-BEDROOM PENTHOUSE)

UNIT #25-08
AREA 926 SQFT / 86 SQM



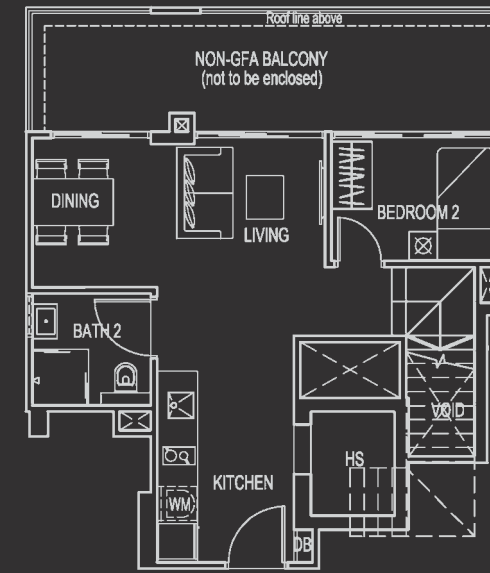
LOWER STOREY



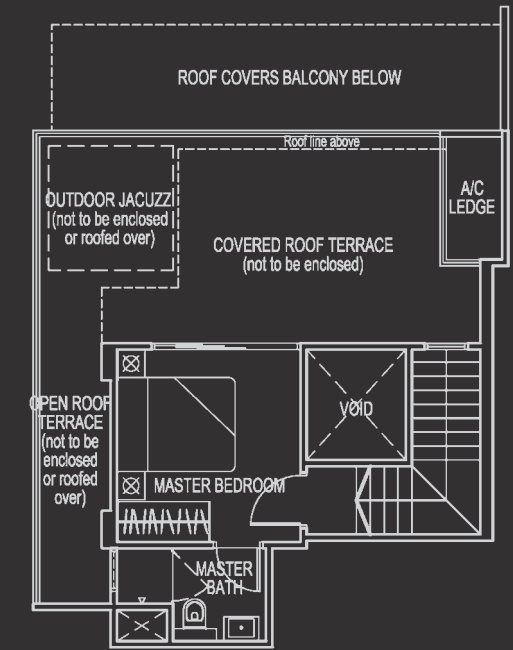
UPPER STOREY

TYPE B-P
(2-BEDROOM PENTHOUSE)

UNIT #25-05
AREA 1163 SQFT / 108 SQM



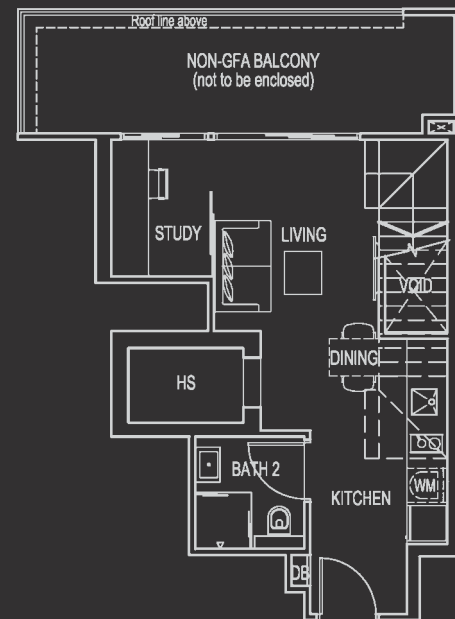
LOWER STOREY



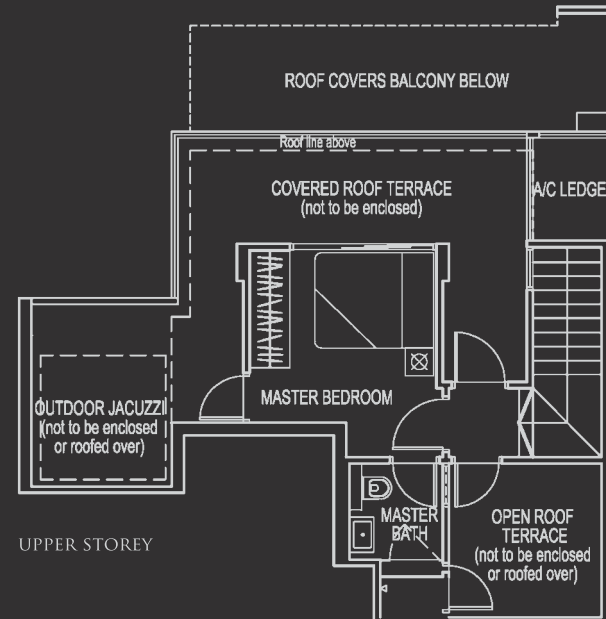
UPPER STOREY

TYPE A3-P
(1+1-BEDROOM PENTHOUSE)

UNIT #25-04
AREA 1119 SQFT / 104 SQM



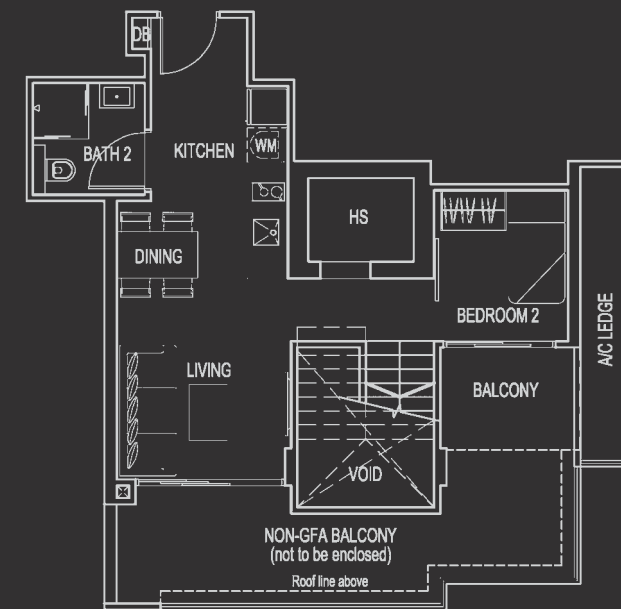
LOWER STOREY



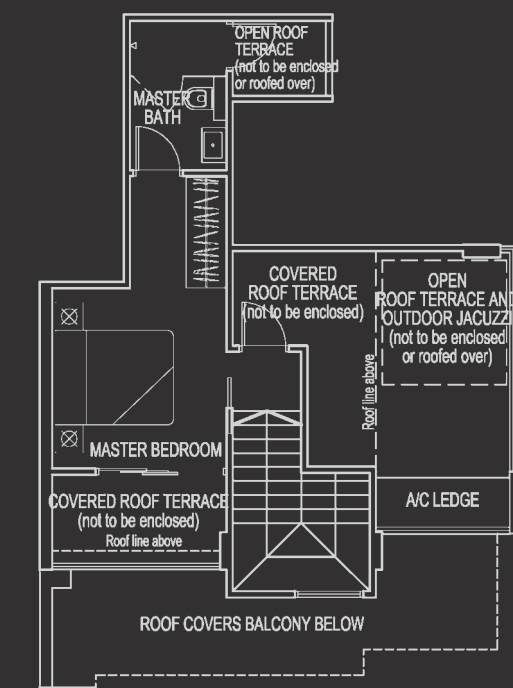
UPPER STOREY

TYPE B1-P
(2-BEDROOM PENTHOUSE)

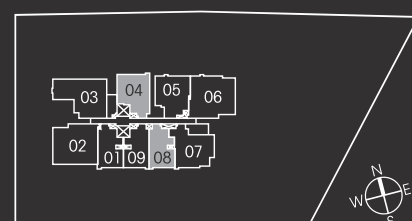
UNIT #25-07
AREA 1216 SQFT / 113 SQM



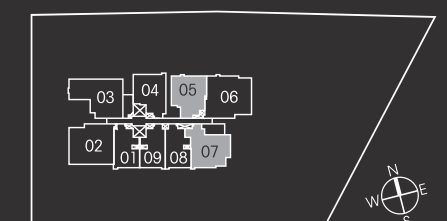
LOWER STOREY



UPPER STOREY



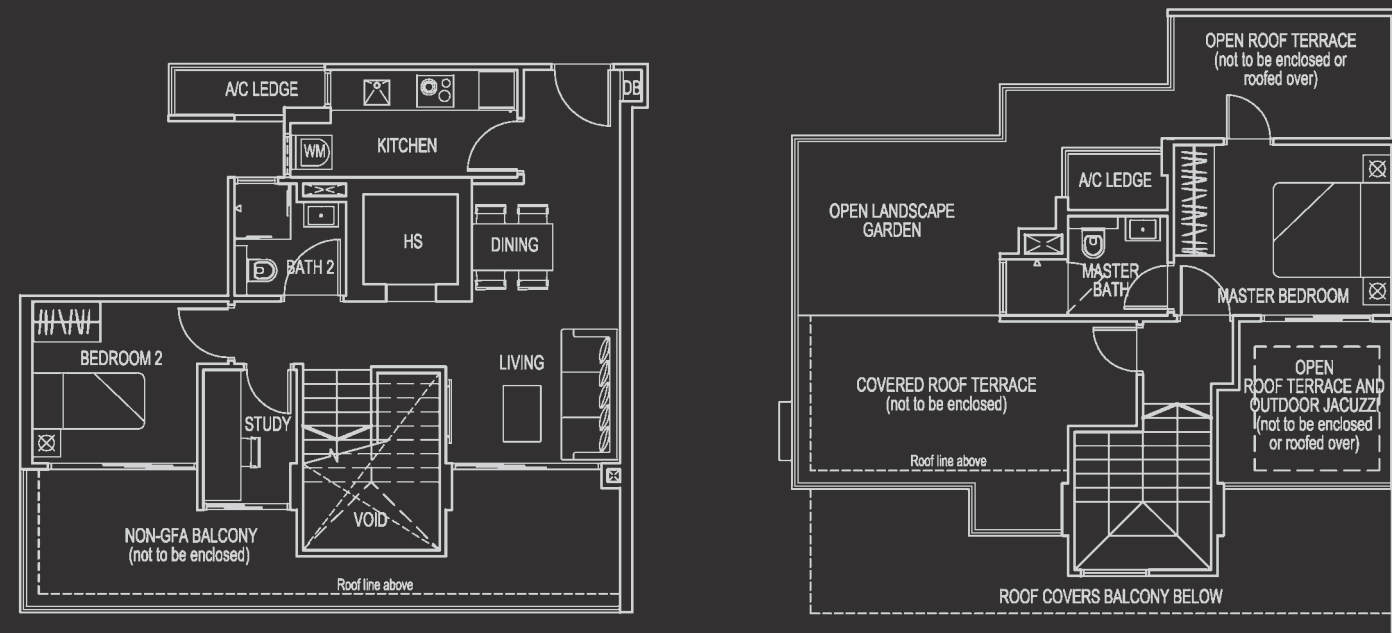
ALL PLANS ARE SUBJECT TO AMENDMENTS AS APPROVED BY THE RELEVANT AUTHORITIES.
FLOOR AREAS ARE APPROXIMATE MEASUREMENTS AND SUBJECT TO FINAL SURVEY.



ALL PLANS ARE SUBJECT TO AMENDMENTS AS APPROVED BY THE RELEVANT AUTHORITIES.
FLOOR AREAS ARE APPROXIMATE MEASUREMENTS AND SUBJECT TO FINAL SURVEY.

TYPE C-P
(2+1-BEDROOM PENTHOUSE)

UNIT #25-02
AREA 1539 SQFT / 143 SQM

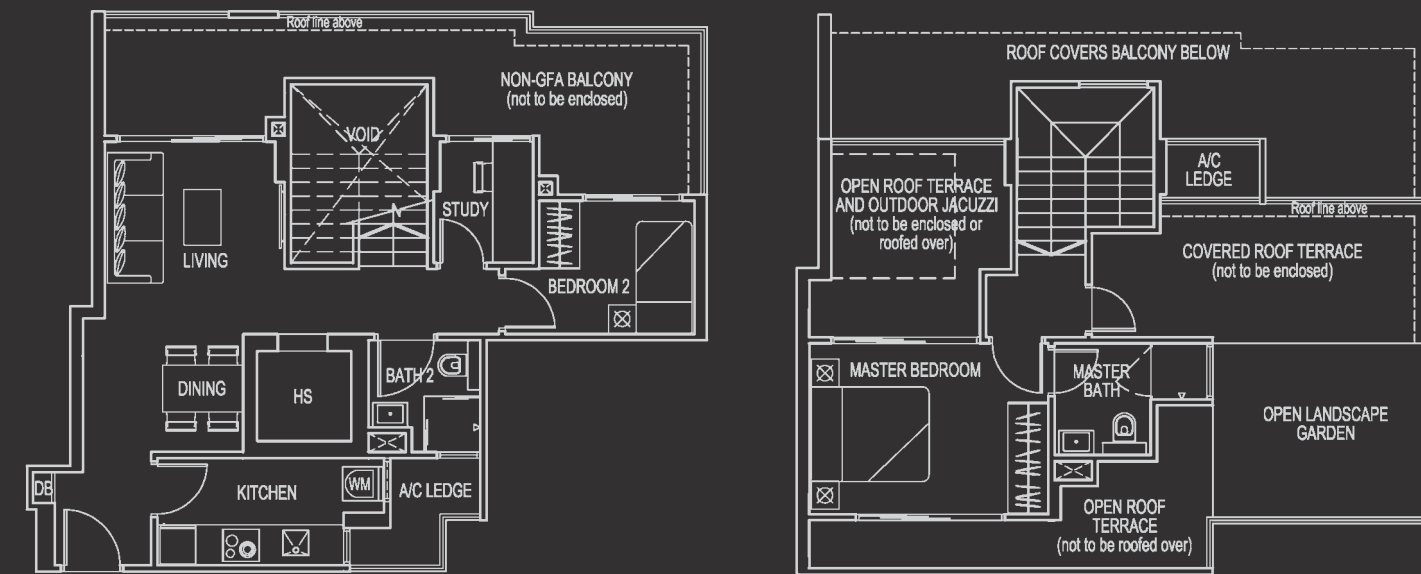


LOWER STOREY

UPPER STOREY

TYPE C1-P
(2+1-BEDROOM PENTHOUSE)

UNIT #25-06
AREA 1539 SQFT / 143 SQM

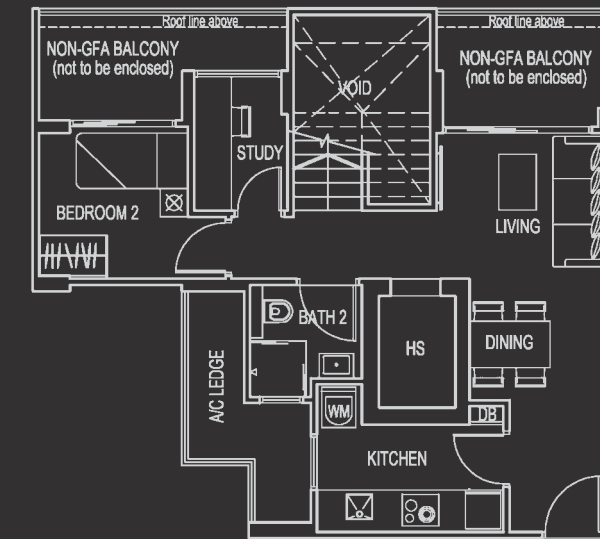


LOWER STOREY

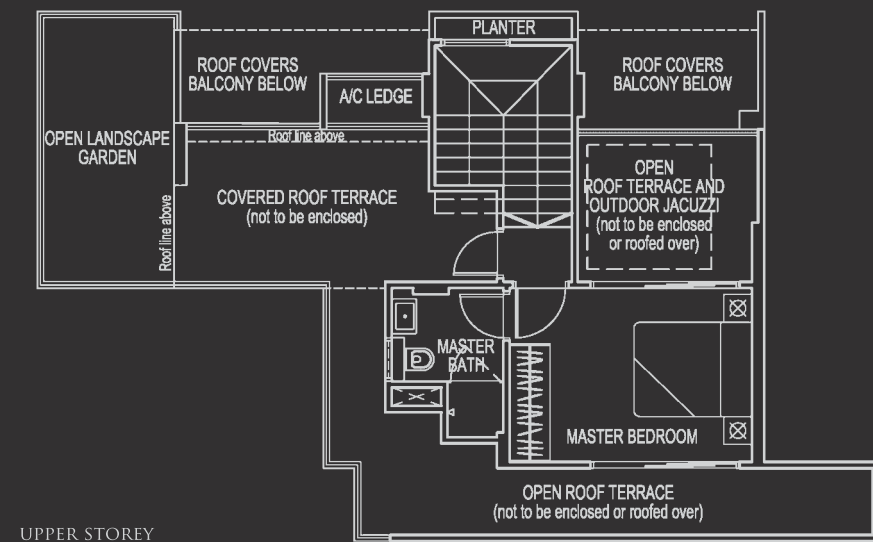
UPPER STOREY

TYPE C2-P
(2+1-BEDROOM PENTHOUSE)

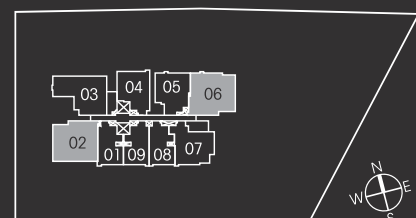
UNIT #25-03
AREA 1496 SQFT / 139 SQM



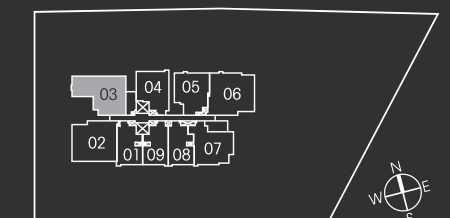
LOWER STOREY



UPPER STOREY



ALL PLANS ARE SUBJECT TO AMENDMENTS AS APPROVED BY THE RELEVANT AUTHORITIES.
FLOOR AREAS ARE APPROXIMATE MEASUREMENTS AND SUBJECT TO FINAL SURVEY.



ALL PLANS ARE SUBJECT TO AMENDMENTS AS APPROVED BY THE RELEVANT AUTHORITIES.
FLOOR AREAS ARE APPROXIMATE MEASUREMENTS AND SUBJECT TO FINAL SURVEY.